

Future and Emerging Technologies



“Incubator for radically new research ideas”

FET-Open in WP2011-2012



FET-Open in WP2011-2012



FET research scheme is unique *by combining the following characteristics*

- **Foundational**
New foundations for future ICT by exploring new unconventional ideas and scientific paradigms
- **Transformative**
Driven by ideas that challenge and can radically change our understanding of scientific concepts behind existing ITs
- **High risk, high pay-off**
Balances risks against high potential returns and the chance of revolutionary breakthroughs
- **Purpose-driven**
Impact on future industrial ICT research agendas
- **Multidisciplinary**
Synergies with and cross-fertilization between disciplines
- **Collaborative**
Best teams in Europe and increasingly worldwide



FET-Open in WP2011-2012



European Commission
Information Society and Media

Future & Emerging Technologies-FET

Supporting the emergence of new visionary ICT research

An early detector, incubator and pathfinder for new ideas and themes for long-term research in the area of information and communication technologies

High risk research, offset by potential breakthrough with high technological and/or societal impact

Two complementary inter-linked funding schemes
FET Proactive & FET Open

FET Proactive

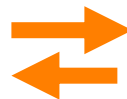
- Top-down approach
- Set of emerging pre-defined themes



FET Open

- Bottom-up approach
- Open to any research idea
- Radical novelty

European Commission
Information Society and Media



FET-Open in WP2011-2012

FET-Open vision

the business-angels for research

“Incubator for radically new research ideas”

New ideas with long-term visionary impact on ICT ...

- ... can come from anywhere, from anybody and at anytime;
- ... are hard to find;
- ... are fragile and easy to shoot down;
- ... are hard to do and take time to incubate;
- ... require an open and transdisciplinary research atmosphere.

Needs a specific approach: FET-Open scheme

FET-Open call: a unique scheme

Continuously open call

a fast and light scheme fitted to stimulate and capture new opportunities and developments in science and technology as they emerge

The FET-Open 'scheme' is open to:

- any ideas within ICT
 - bottom-up, no predefined themes and orientations
- at anytime
 - Continuously open call
- from anyone
 - anonymous evaluation of “short” proposals
- in a light and friendly way
 - two-step submission: Start with a ‘short’ 5 pages proposal



FET-Open in WP2011-12

*One vision, one scheme
implemented through 4 objectives*

“Incubator for radically new research ideas”

4 interrelated objectives aiming at challenging current thinking and at attracting future potential:

- ICT-2011.9.1: Challenging current Thinking
- ICT-2011.9.2: High-Tech Research Intensive SMEs in FET research
- ICT-2011.9.3: FET Young Explorers
- ICT-2011.9.4: International cooperation on FET research



FET-Open ICT-2011.9.1: Challenging current thinking - STREPs

What are we looking for ?

- Exploration of **new** and alternative ideas that, because of their **risky** or **non-conventional** nature, would not be supported elsewhere in the ICT WP. It seeks:
 - **foundational breakthroughs** as crucial steps towards radically new forms and uses of information and information technologies within a clear long-term vision that is far beyond the state of the art
 - **ambitious proof-of-concept** and its supporting scientific foundation, where novelty comes from new, high-risk ideas rather than from the refinement of current ICT approaches
 - **new inter-disciplinary collaborations**, possibly with prominent and internationally recognised non-EU research teams where these can provide a significant added value
 - 75 M€ for STREP (& CSA)
 - 2-step submission and evaluation scheme
- proposals continuously receivable until 11 September 2012

FET-Open ICT-2011.9.1: Challenging current thinking - CSAs

What are we looking for ?

- CSAs for creating the best conditions within which FET research can flourish and achieve transformative impacts that it aspires to. These activities may be, for example:
 - actions, including networking and dissemination activities, aiming at the **emergence of new research communities and collaborations** involving a broad diversity of disciplines and actors into FET research
 - actions towards the increased involvement **high-tech research intensive SMEs**
 - actions that stimulate excellence and future leadership of **pioneering teams of Young Researchers**
 - actions aiming to strengthen the **international dimension** of FET
 - Up to 7.5 M€ for CSA
 - 1-step submission and evaluation scheme
- proposals continuously receivable until 12 March 2013



FET-Open in WP2011-2012



European Commission
Information Society and Media



FET-Open ICT-2011.9.2: High-tech research intensive SMEs in FET research

What are we looking for ?

- High-tech research intensive SMEs ready to take a driving role in collaborative FET projects, by setting and co-executing the ambitious FET research agenda centred on their needs
 - link novel science with marketable ideas that can lead to new visionary business opportunities and create future markets;
 - generate a new scientific and technological asset for SMEs to establish themselves firmly as future innovation players
 - increased visibility, exposure and impact of FET projects by fostering the rapid maturing of breakthrough technologies
- Funding: 9M€
- Target: 'Small' STREP proposals, grant in the order of 1 M€*
- Eligibility: Consortium must contain a High Tech Research Intensive SME
- Submission: 2-step submission/evaluation process; short proposals receivable continuously from 4 August 2010 until 11 September 2012



(*) the largest share of the resources is to be allocated to the participating SMEs
FET-Open in WP2011-2012



FET-Open

ICT-2011.9.3: FET Young Explorers

What are we looking for ?

- Captures the creative potential of young researchers in FET type of research
- Fosters their leadership and participation: put them in the driver seat of FET-like collaborative research projects
- Empowers the next generation of European independent research leaders
- Promotes early independence of high-potential young researchers
- Funding: 6M€
- Target: 'Small' STREP proposals; grant in the order of 1 M€
- Eligibility: Project and all Workpackages must be led by Young Researchers*
- Submission: 2-step submission/evaluation process; short proposals receivable continuously from 4 August 2010 until 11 September 2012



(*) Young researcher is defined as up to PhD + 6 years (or equivalent) at proposal submission date

FET-Open in WP2011-2012



FET-Open ICT-2011.9.4: : International cooperation on FET research *Top-up call*

What are we looking for ?

- Extension of ongoing FET projects with complementary research activities, in which collaboration with non-EU research partners of excellent global standing brings significant added value
- Focus on new research activities that
 - Expand the research challenge and global reach of FET research
 - Increase the impact of the initial project
 - Foster cooperation among top EU and non-EU research teams
- Funding: 3M€, for top-up funding for partners from the ongoing FET project and by the new non-EU research participants to cover the coordination and joint research activities
- Eligibility: Restricted to on-going FET IPs & STREPs projects ending at least 18 months after the submission date of the proposal.
- Submission: 1-step submission/evaluation process; proposals receivable continuously up to 12 March 2013

+ a special initiatives in Call 8
on 'Science of Global Systems'



FET-Open in WP2011-2012



ICT-2011.9.14: Joint call on 'Science of Global Systems'

INFSO ICT/RTD SSH

What are we looking for ?

- Progressing research on global systems dynamics to better understand the interactions between ecological and socio-economic systems and to improve their ability to respond to global environmental changes.
- Better links between modellers and stakeholders facilitated by new policy-relevant concepts in modelling of global systems
- Overcome fragmentation in research in various policy-relevant models resulting in a better uptake of modelling results for global coordination of policies
- Policy uptake in targeted areas: socio-ecological system and climate change impacts, innovation as a global system, dynamics of the financial system and new models for economy.
- Funding: 3.5* M€ for STREP, Call 8
- Submission: 1-step submission/evaluation process; proposals receivable continuously up to 12 March 2013

(*) ICT contribution, an additional contribution of 3.5M€ is expected from the Social Sciences and Humanities prior to FET-Open in WP2011-2012



Annexe



FET-Open in WP2011-2012

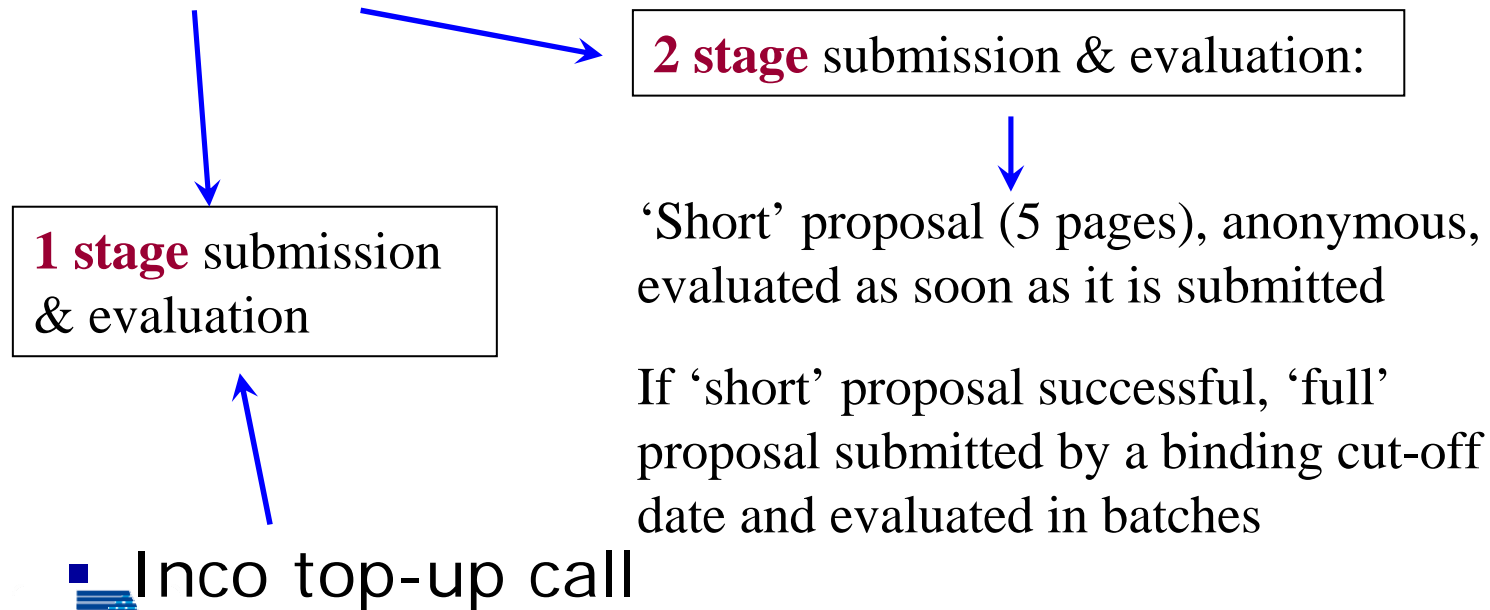


European Commission
Information Society and Media

FET-Open

Scheme implementation and funding instruments

- Continuation of the successful & popular scheme of FP6
- CSA & STREP funding instruments



How to submit to FET-Open ?

Two stage submission (STREPs)

Anytime

Short proposal

- 5 pages maximum
- anonymous

Fixed 'cut-off'

Full proposal

- ~ 30 pages
- Not anonymous

Negotiation

FET evaluation
Criteria – 'short' STREP

1. S/T quality	2. Implementation	3. Impact
<ul style="list-style-type: none"> Clarity of targeted breakthrough and its relevance towards a long-term vision Novelty and foundational character Plausibility of the S/T approach 	(not applicable to short STREP)	(not applicable to short STREP)
Threshold: 4.0/5		

FET-Open in WP2011-2012

FET evaluation
Selection and award criteria – 'full' STREP

1. S/T quality	2. Implementation	3. Impact
<ul style="list-style-type: none"> Clarity of targeted breakthrough and its relevance towards a long-term vision Novelty and foundational character Specific contribution to progress in science and technology Quality and effectiveness of the S/T methodology 	<ul style="list-style-type: none"> Quality of workplan and management. Quality and relevant experience of the individual participants Quality of the consortium as a whole (including complementarity, balance) Appropriate allocation and justification of the resources to be committed (person-months, equipment, budget) 	<ul style="list-style-type: none"> Transformational impact of the results on science, technology and/or society Impacts towards the targeted objective in the work programme Appropriateness of measures envisaged for the dissemination and/or use of project results.
Threshold: 4.0/5 Weight: 50%	Threshold: 3/5 Weight: 20%	Threshold: 3.5/5 Weight: 30%

FET-Open in WP2011-2012

Project

FET evaluation

Criteria – 'short' STREP

1. <i>S/T quality</i>	2. <i>Implementation</i>	3. <i>Impact</i>
<ul style="list-style-type: none"> • Clarity of targeted breakthrough and its relevance towards a long-term vision • Novelty and foundational character • Plausibility of the S/T approach 	<i>(not applicable to short STREP)</i>	<i>(not applicable to short STREP)</i>
Threshold: 4.0/5		

FET evaluation

Selection and award criteria – ‘full’ STREP

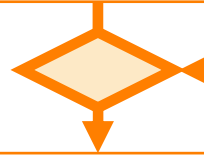
1. S/T quality	2. Implementation	3. Impact
<ul style="list-style-type: none"> • Clarity of targeted breakthrough and its relevance towards a long-term vision • Novelty and foundational character • Specific contribution to progress in science and technology • Quality and effectiveness of the S/T methodology 	<ul style="list-style-type: none"> • Quality of workplan and management. • Quality and relevant experience of the individual participants • Quality of the consortium as a whole (including complementarity, balance) • Appropriate allocation and justification of the resources to be committed (person-months, equipment, budget) 	<ul style="list-style-type: none"> • Transformational impact of the results on science, technology and/or society • Impacts towards the targeted objective in the work programme • Appropriateness of measures envisaged for the dissemination and/or use of project results.
<p>Threshold: 4/5 Weight: 50%</p>	<p>Threshold: 3/5 Weight: 20%</p>	<p>Threshold: 3.5/5 Weight: 30%</p>

How to submit to FET-Open?

Exception: ICT-2011.9.4: International cooperation in FET – top-up to on going IPs and STREPs

Anytime

'Top-up' proposal
– ~ 30 pages
– Not anonymous



Negotiation

FET evaluation
Selection and award criteria – 'full' STREP

1. S/T quality	2. Implementation	3. Impact
<ul style="list-style-type: none"> Clarity of targeted breakthrough and its relevance towards a long-term vision Novelty and foundational character Specific contribution to progress in science and technology Quality and effectiveness of the S/T methodology 	<ul style="list-style-type: none"> Quality of workplan and management Quality and relevant experience of the individual participants Quality of the consortium as a whole (including complementarity, balance) Appropriate allocation and justification of the resources to be committed (person-months, equipment, budget) 	<ul style="list-style-type: none"> Transformational impact of the results on science, technology and/or society Impacts towards the targeted objective in the work programme Appropriateness of measures envisaged for the dissemination and/or use of project results.
Threshold: 4.0/5 Weight: 50%	Threshold: 3/5 Weight: 20%	Threshold: 3.5/5 Weight: 30%

FET-Open in WP2011-2012

Project

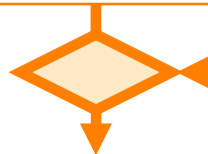
How to submit to FET-Open ?

Coordination and Support Action

Anytime

Full proposal

- ~ 30 pages
- Not anonymous



Negotiation

FET eligibility, evaluation, selection and award criteria - CSA

1. S/T quality	2. Implementation	3. Impact
<ul style="list-style-type: none"> • Clarity of objectives. • Contribution to the co-ordination and/or support of high-risk and high-impact research, for new or emerging areas or horizontally • Quality and effectiveness of the coordination and/or support activities 	<ul style="list-style-type: none"> • Quality of workplan and management. • Quality and relevant experience of the individual participants • Quality of the consortium • Appropriate management of the resources to be committed (person-months equipment, budget) 	<ul style="list-style-type: none"> • Transformational impact on the communities and/or practices for high-risk and high-impact research • Appropriateness of measures for spreading excellence, use of results, and dissemination of knowledge, including engagement with stakeholders
Threshold: 3/5 Weight: 40%	Threshold: 3/5 Weight: 20%	Threshold: 3/5 Weight: 40%

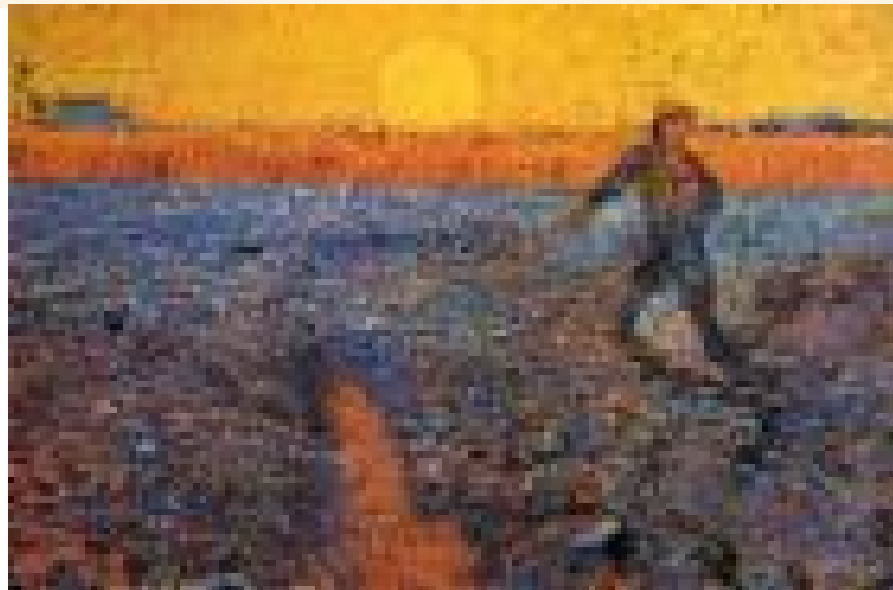
FET-Open in WP2011-2012

Project

FET eligibility, evaluation, selection and award criteria - **CSA**

1. S/T quality	2. Implementation	3. Impact
<ul style="list-style-type: none"> • Clarity of objectives. • Contribution to the co-ordination and/or support of high-risk and high-impact research, for new or emerging areas or horizontally • Quality and effectiveness of the coordination and/or support activities 	<ul style="list-style-type: none"> • Quality of workplan and management. • Quality and relevant experience of the individual participants • Quality of the consortium • Appropriate management of the resources to be committed (person-months equipment, budget) 	<ul style="list-style-type: none"> • Transformational impact on the communities and/or practices for high-risk and high-impact research • Appropriateness of measures for spreading excellence, use of results, and dissemination of knowledge, including engagement with stakeholders
Threshold: 3/5 Weight: 40%	Threshold: 3/5 Weight: 20%	Threshold: 3/5 Weight: 40%

Thank you for your attention



The sower, Vincent van Gogh

Further information:

http://cordis.europa.eu/fp7/ict/fet-open/home_en.html



FET-Open in WP2011-2012



European Commission
Information Society and Media

